

b o n d i



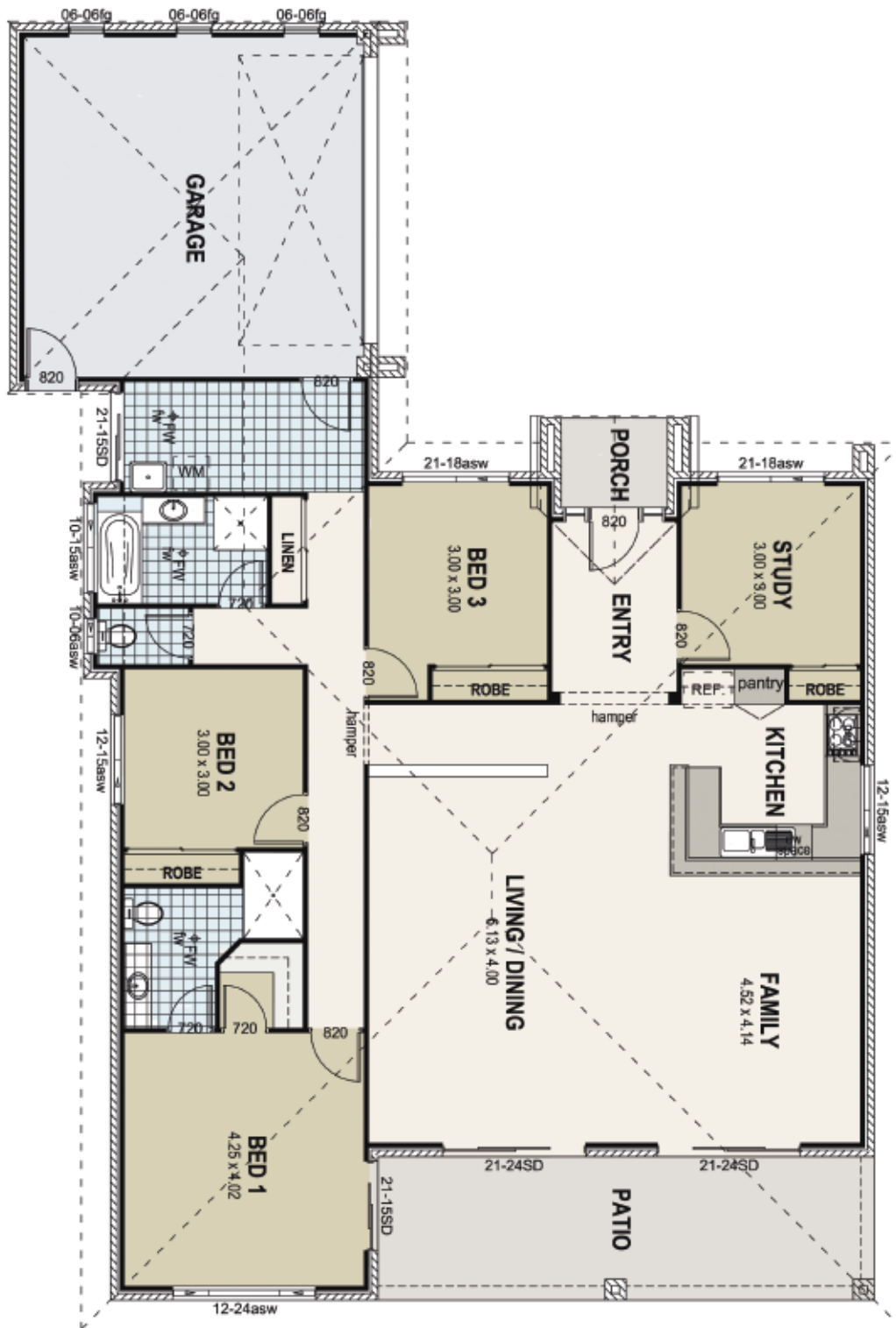
b o n d i

Australia's open and accessible coastline demands that homes on or near the water invite the outside in. A design which naturally catches the breezes, Bondi takes its queues from the Southern attitude toward maximising the appeal of land near the water.

An open plan approach creates a sense of space far beyond the physical footprint of the layout. Occupants are invited to casually inspect each surface within the home's designer interior.

Three bedrooms plus study cater for a variety of living demands. Maximum privacy has been allotted to the main bedroom and ensuite, ensuring Bondi's owners are afforded the full benefits that this delightful residence can offer.

ip u o q



TOTAL HOUSE AREA
225.57 sq.m (24.28 sqs)
HOUSE WIDTH - 15.00m
HOUSE LENGTH - 21.91m
(includes eaves)